

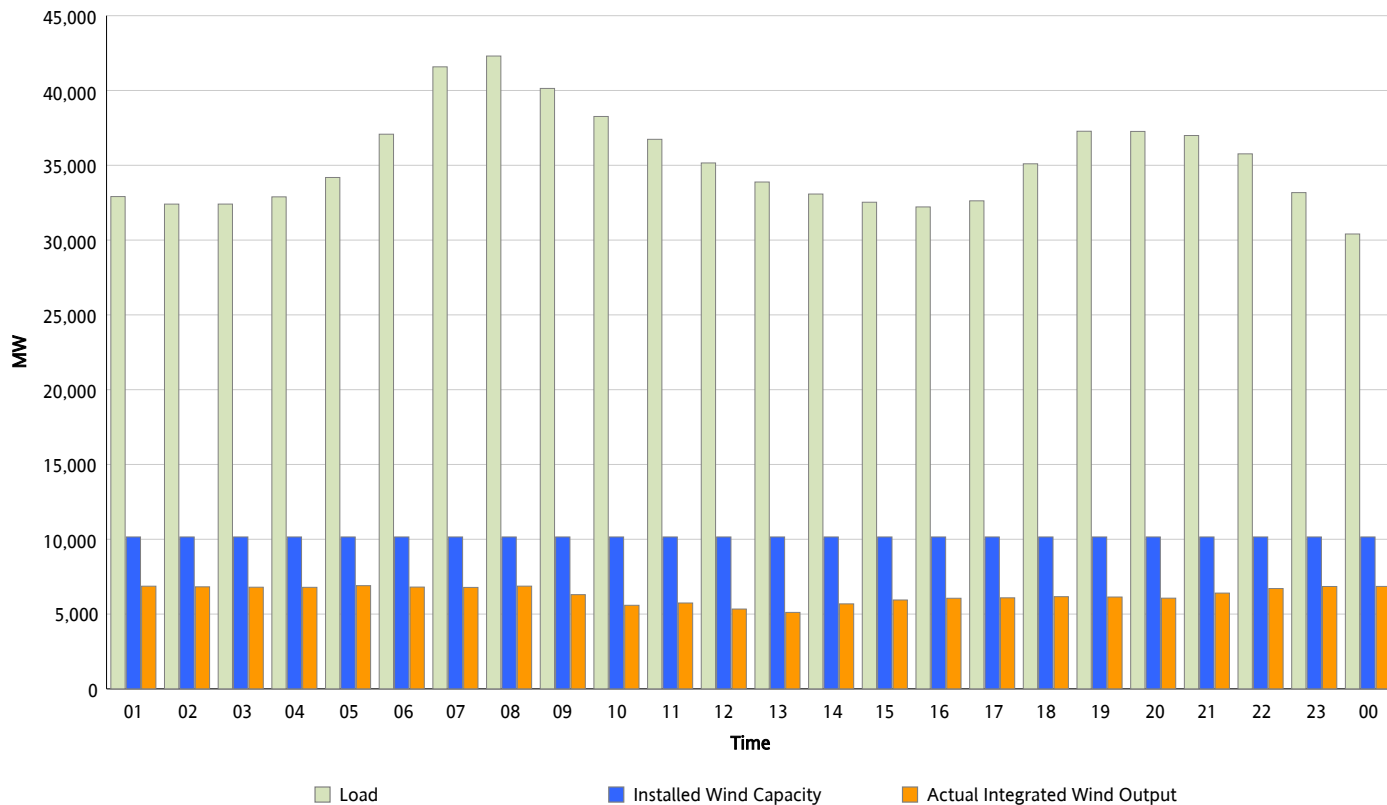


## ERCOT Grid Operations

### Wind Integration Report : 12/13/2012

Peak Load	42,302 MW
Load Peak Hour (HE)	08
Wind Over Peak	6,867 MW
Wind Record 11/10/12	8,521 MW
Max Wind Value*	6,995 MW
Wind Peak Time	04:25
Wind Integration %	20.57 %

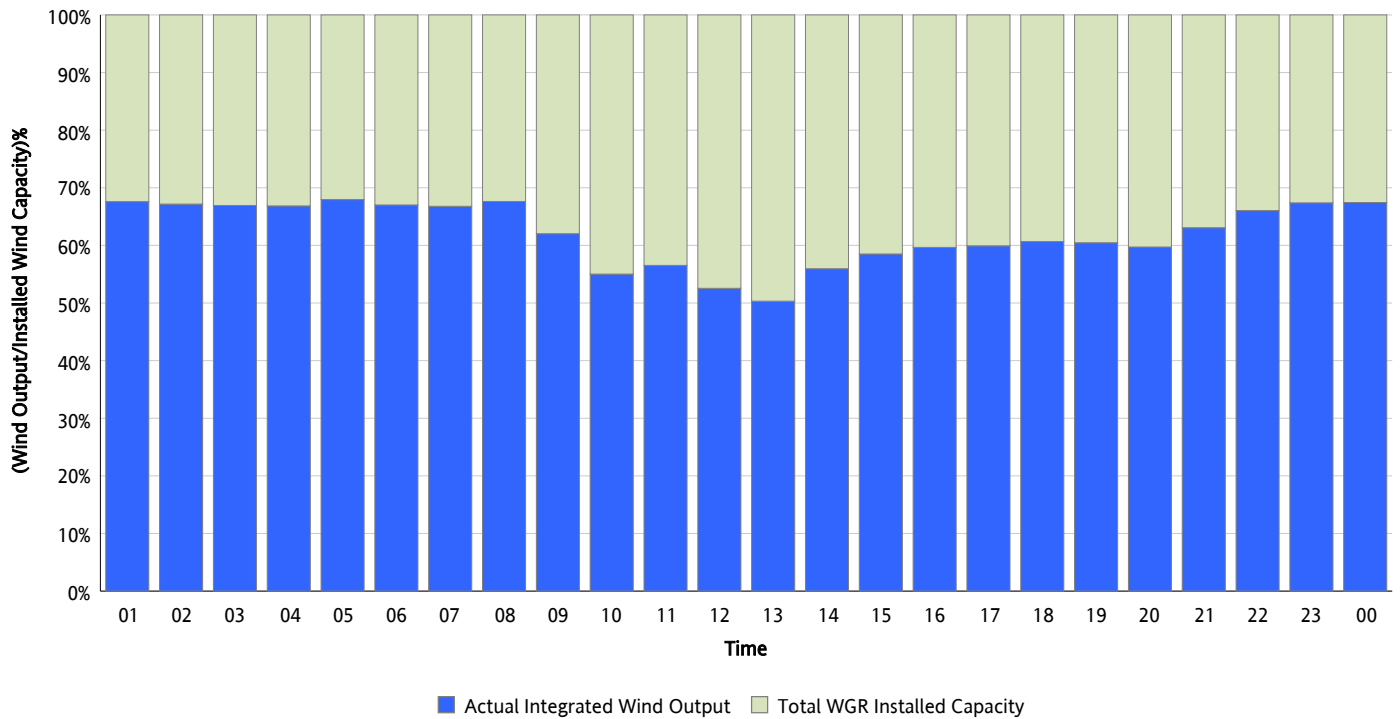
**Hourly Average Actual Load vs. Actual Wind Output**  
**12/13/2012**



\* Wind Record and Wind Max represent instantaneous values and the rest of the values are integrated over the hour

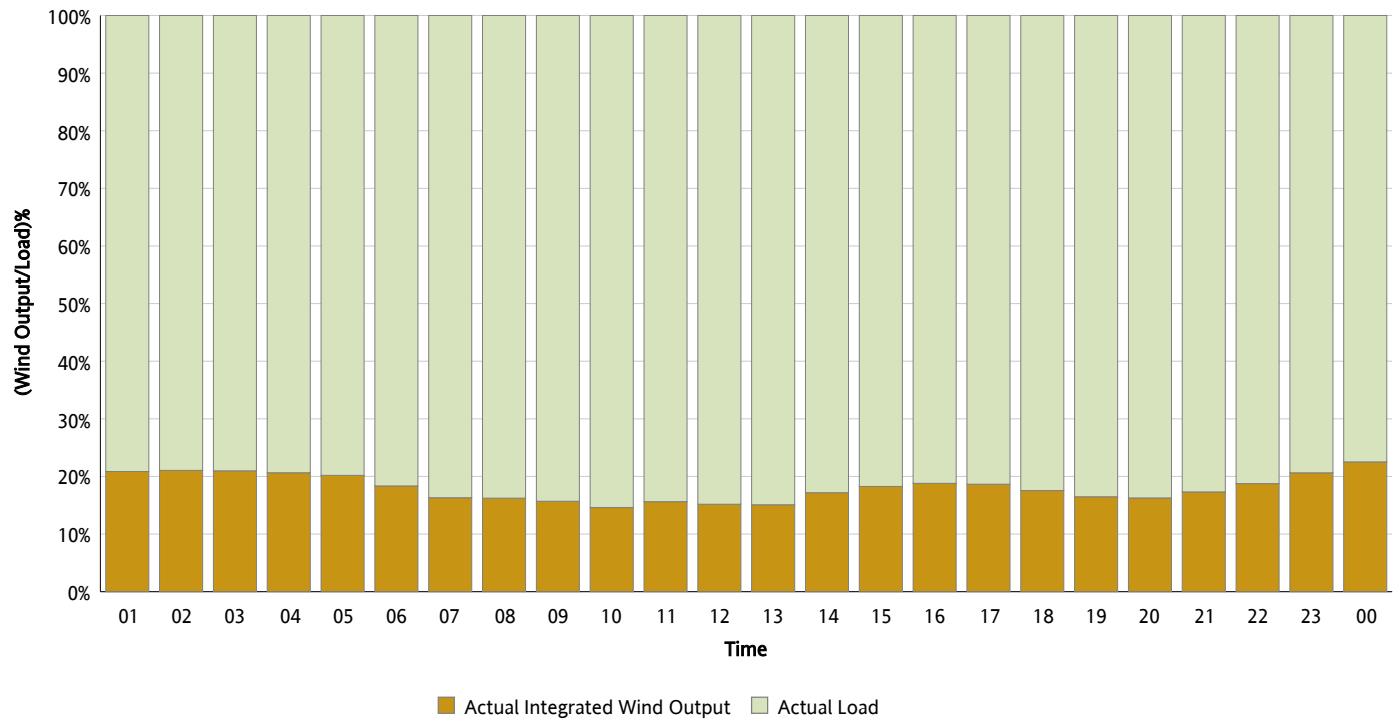
## Actual Wind Output as a Percentage of the Total Installed Wind Capacity

12/13/2012



## Actual Wind Output as a Percentage of the ERCOT Load

12/13/2012



## ERCOT Load vs. Actual Wind Output

12/06/2012 - 12/13/2012

